



Cable ID: UTP CAT6 PE LCU6-21CU-0305-BK

Test Summary: PASS

Date / Time: 07/17/2019 02:36:07 PM

Operator: JXT

Model: DTX-1800

Headroom 7.0 dB (NEXT 36-78)

Software Version: 2.7800

Main S/N: 2156539

Test Limit: TIA Cat 6 Channel

Limits Version: 1.9500

Remote S/N: 2156540

Cable Type: Cat 6 U/UTP

Calibration Date:

Main Adapter: DTX-CHA002

NVP: 69.0%

Main (Tester): 08/30/2012

Remote Adapter: DTX-CHA002

Remote (Tester): 08/30/2012

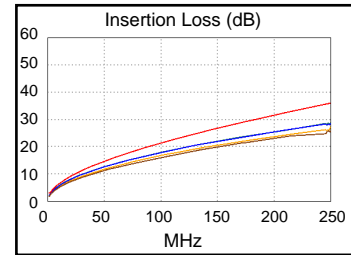
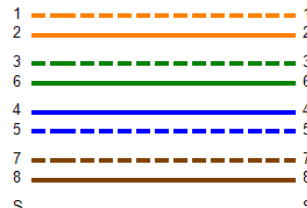
Length (ft), Limit 328	[Pair 78]	330
Prop. Delay (ns), Limit 555	[Pair 45]	514
Delay Skew (ns), Limit 50	[Pair 45]	28
Resistance (ohms)	[Pair 36]	19.4
Insertion Loss Margin (dB)	[Pair 36]	7.3
Frequency (MHz)	[Pair 36]	249.5
Limit (dB)	[Pair 36]	35.9



330 ft

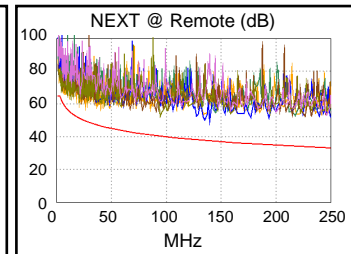
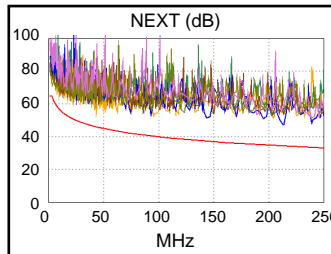


Wire Map (T568B)
PASS

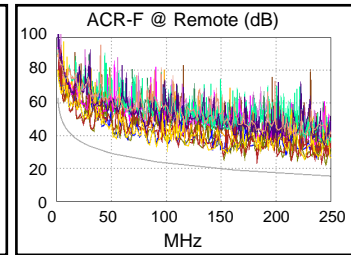
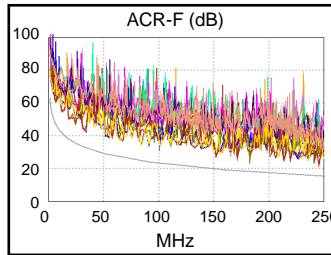


Worst Case Margin Worst Case Value

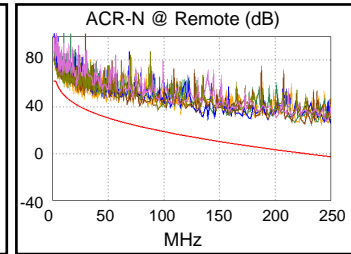
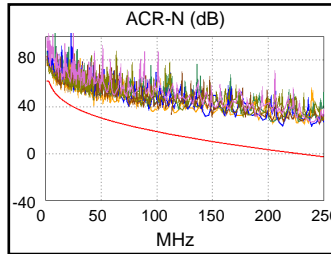
PASS	MAIN	SR	MAIN	SR
Worst Pair	36-78	36-78	12-78	12-78
NEXT (dB)	7.0	7.4	12.9	11.9
Freq. (MHz)	3.1	4.1	213.0	140.0
Limit (dB)	64.8	62.8	34.3	37.4
Worst Pair	36	36	12	12
PS NEXT (dB)	7.5	7.1	14.6	13.7
Freq. (MHz)	3.3	4.3	213.0	135.0
Limit (dB)	62.0	60.1	31.4	34.8



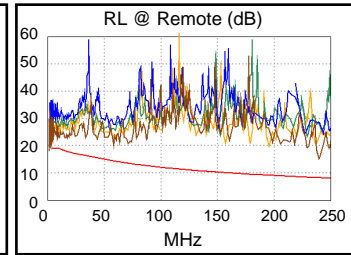
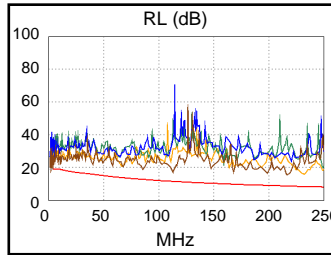
PASS	MAIN	SR	MAIN	SR
Worst Pair	45-36	36-45	45-36	36-45
ACR-F (dB)	5.7	5.5	6.7	6.9
Freq. (MHz)	153.0	153.0	245.5	245.5
Limit (dB)	19.6	19.6	15.5	15.5
Worst Pair	36	45	36	45
PS ACR-F (dB)	8.7	8.7	8.8	9.7
Freq. (MHz)	153.0	153.0	245.5	245.5
Limit (dB)	16.6	16.6	12.5	12.5



N/A	MAIN	SR	MAIN	SR
Worst Pair	36-78	36-78	12-78	36-45
ACR-N (dB)	7.9	8.4	25.1	24.0
Freq. (MHz)	3.1	4.1	239.0	227.0
Limit (dB)	61.2	58.7	-1.5	-0.1
Worst Pair	36	36	45	12
PS ACR-N (dB)	7.9	7.5	26.7	28.4
Freq. (MHz)	3.3	4.3	245.5	250.0
Limit (dB)	58.4	56.0	-5.3	-5.8



PASS	MAIN	SR	MAIN	SR
Worst Pair	78	78	78	78
RL (dB)	3.2	3.0	6.6	7.0
Freq. (MHz)	10.8	10.8	217.0	239.5
Limit (dB)	18.8	18.8	8.6	8.2



Compliant Network Standards:

10BASE-T	100BASE-TX	100BASE-T4
1000BASE-T	2.5GBASE-T	5GBASE-T
ATM-25	ATM-51	ATM-155
100VG-AnyLan	TR-4	TR-16 Active
TR-16 Passive		