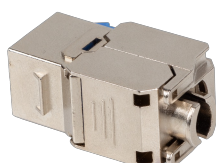
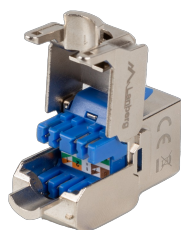
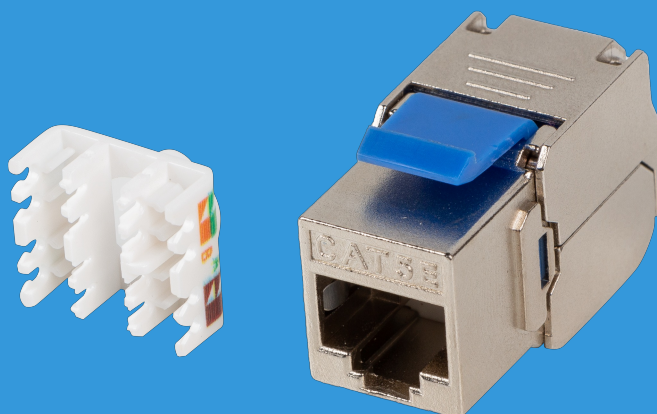


**KSF5-4000**

# KEYSTONE RJ45 8P8C



## PRODUCT FEATURES:

- Tool-less socket,
- LSA connector,
- PoE support in keystone: up to 57V,
- Complies with CAT.5E - EN 50173-1:2011 and EN 60603-7-4 and ANSI/TIA 568-C.2 requirements,
- Shielded (FTP)

## PRODUCT SPECIFICATION:

Type	Module
Connectors	RJ-45
ICT category	Cat. 5/5e
Assembly of the connector	Phosphor bronze
Colour	Silver
Keystone port width	14,5 mm
Keystone port height	16,1 mm
Dimensions	34 x 14,5 x 19,6 mm