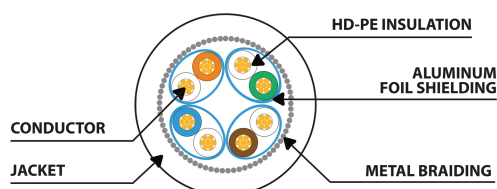
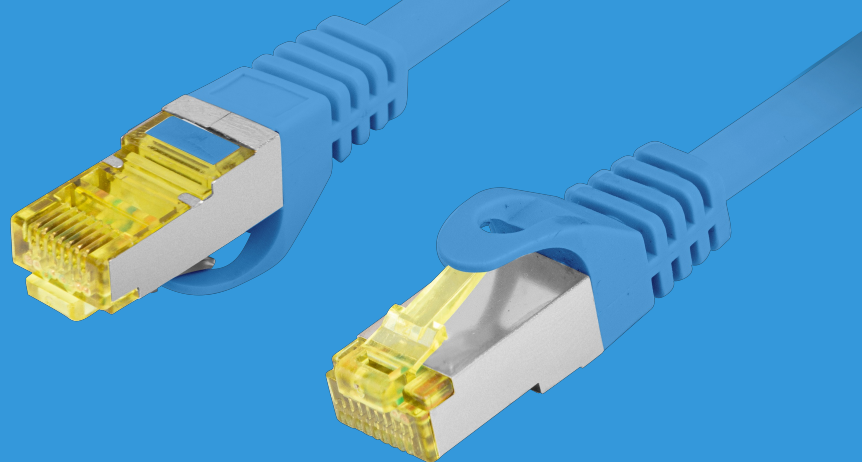


PCF6A-10CU-0300-B

PATCH CABLE CAT.6A



PRODUCT FEATURES:

- S/FTP shielding type – Aluminium braid on wire and each pair foiled additionally
- The coating is made of low-smoke and Halogen-free materials (LSZH)
- Category compliance confirmed by Fluke tester
- Stranded wires made from pure copper

PRODUCT SPECIFICATION:

ICT category	Cat. 6A
Shielding type	S/FTP
Cable length	300 cm
Conductor material	Copper (CU)
Coating material	LSZH
AWG	27
Outer diameter	6 mm
Maximum operating frequency	up to 500 MHz
Colour	Blue

